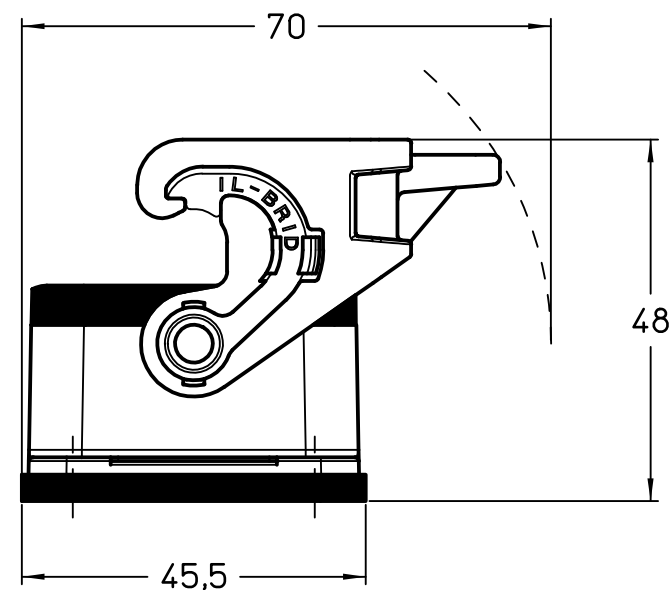
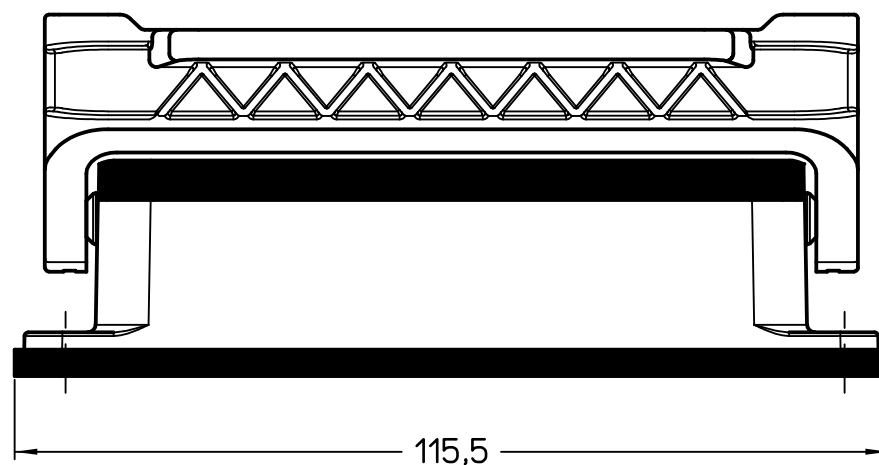
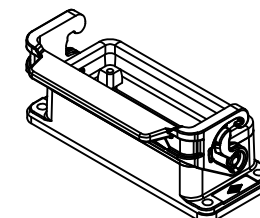


Panel cut-out



|                  |                     |
|------------------|---------------------|
|                  | Dimensions<br>in mm |
| Original Size A4 |                     |
| Date 07/03/23    |                     |
| Sign. G. Renna   |                     |

Simplified representation with dimensions without tolerance

CLI 16 L  
bulkhead mounting housing size "77.27", with 1 IL-BRID lever

Scale  
1:1

